

## CUET PG - Blueprint & Strategy

This comprehensive guide provides an evidence-based analysis of CUET PG Economics examination patterns, trends, and strategic preparation approaches based on four years of examination data and expert insights. The analysis reveals critical patterns in question distribution, difficulty trends, and high-yield topics that can significantly optimize preparation effectiveness for aspiring economics postgraduate students.

### Past Papers Analysis and Exam Pattern Evolution

#### Current Exam Structure (2024-2025)

The CUET PG Economics examination has undergone significant structural changes, with the current pattern featuring 75 multiple-choice questions to be completed in 90 minutes. The examination carries a total of 300 marks with a marking scheme of +4 for correct answers and -1 for incorrect responses, making strategic answering crucial for success.

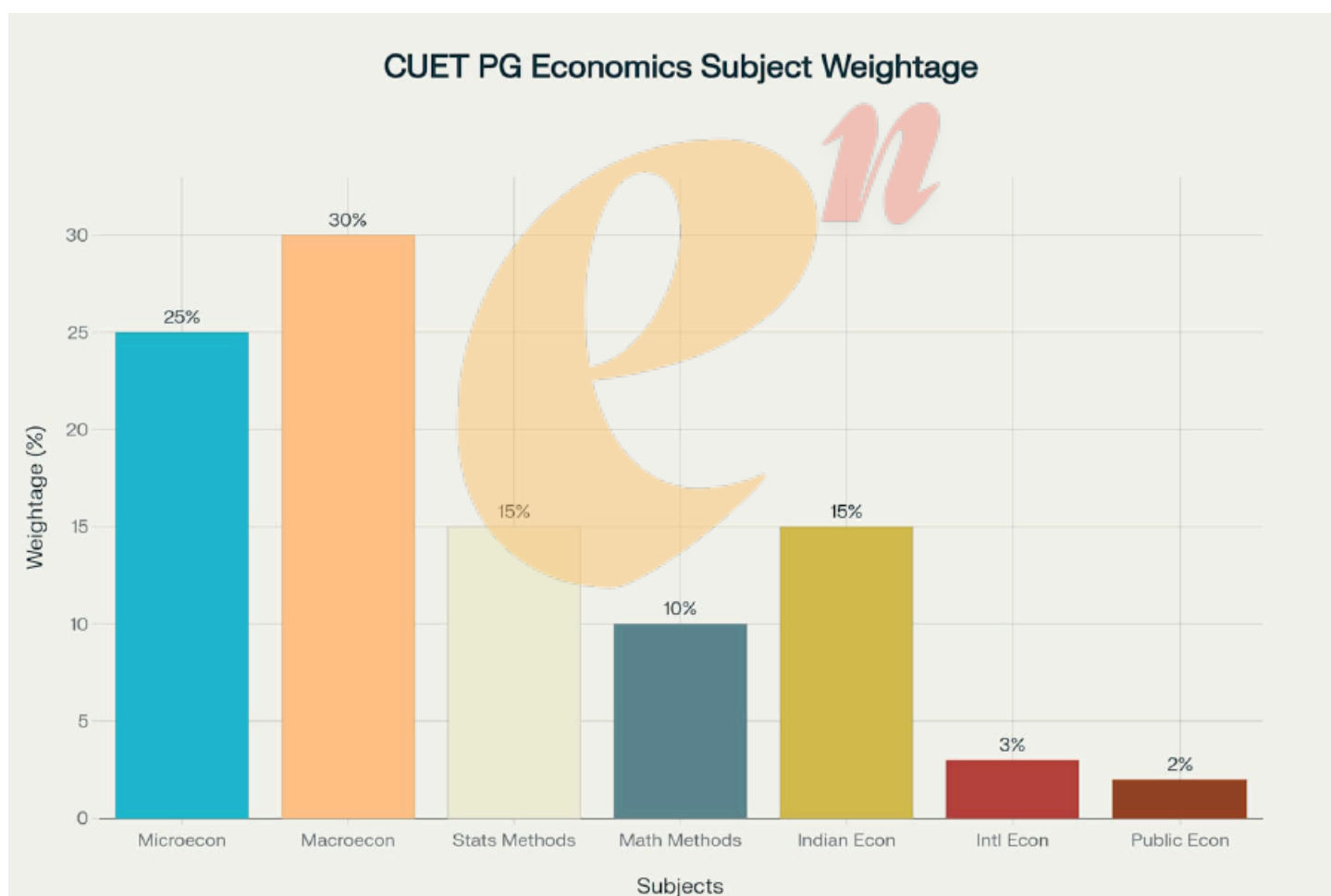
Prior to 2024, the examination followed a different structure with 50 questions (40 to be attempted) in 60 minutes, carrying 200 total marks with +5/-1 marking scheme.

Parameter	2024-2025 Pattern
Total Questions	75
Questions to attempt	75
Duration	90 minutes
Marking scheme (correct)	+ 4
Marking scheme (incorrect)	- 1
Total marks	300
Question type	MCQs only
Language	English and Hindi (Bilingual)

# Subject-wise and Topic-wise Analysis

## Subject Distribution and Weightage

The examination covers seven core subject areas with distinct weightage patterns that have remained relatively consistent across years. Macroeconomics dominates with 30% weightage, followed by Microeconomics at 25%, reflecting the fundamental importance of these core economic theories.



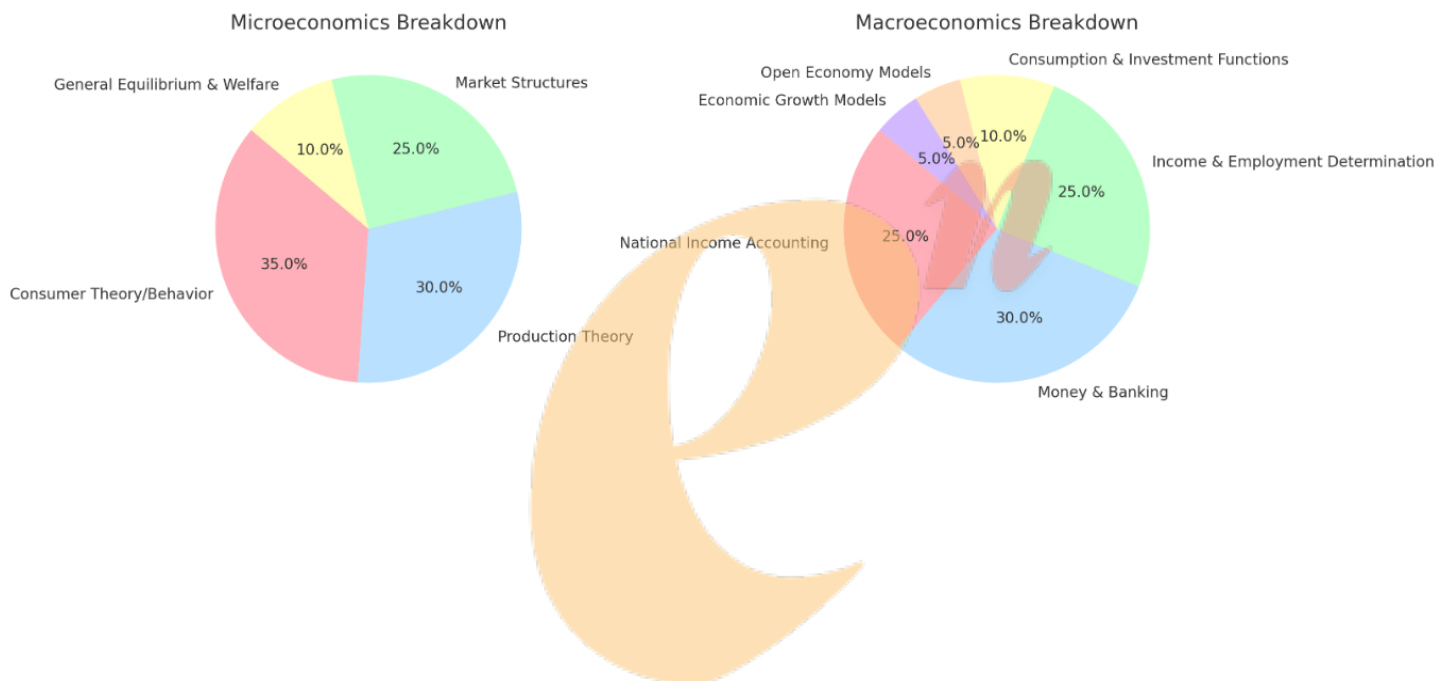
## Detailed Subject-wise Breakdown

Microeconomics (25% weightage):

- Consumer Theory/Behavior: 35% of micro questions
- Production Theory: 30% of micro questions
- Market Structures: 25% of micro questions
- General Equilibrium & Welfare: 10% of micro questions

## Macroeconomics (30% weightage):

- National Income Accounting: 25% of macro questions
- Money & Banking: 30% of macro questions
- Income & Employment Determination: 25% of macro questions
- Consumption & Investment Functions: 10% of macro questions
- Open Economy Models: 5% of macro questions
- Economic Growth Models: 5% of macro questions



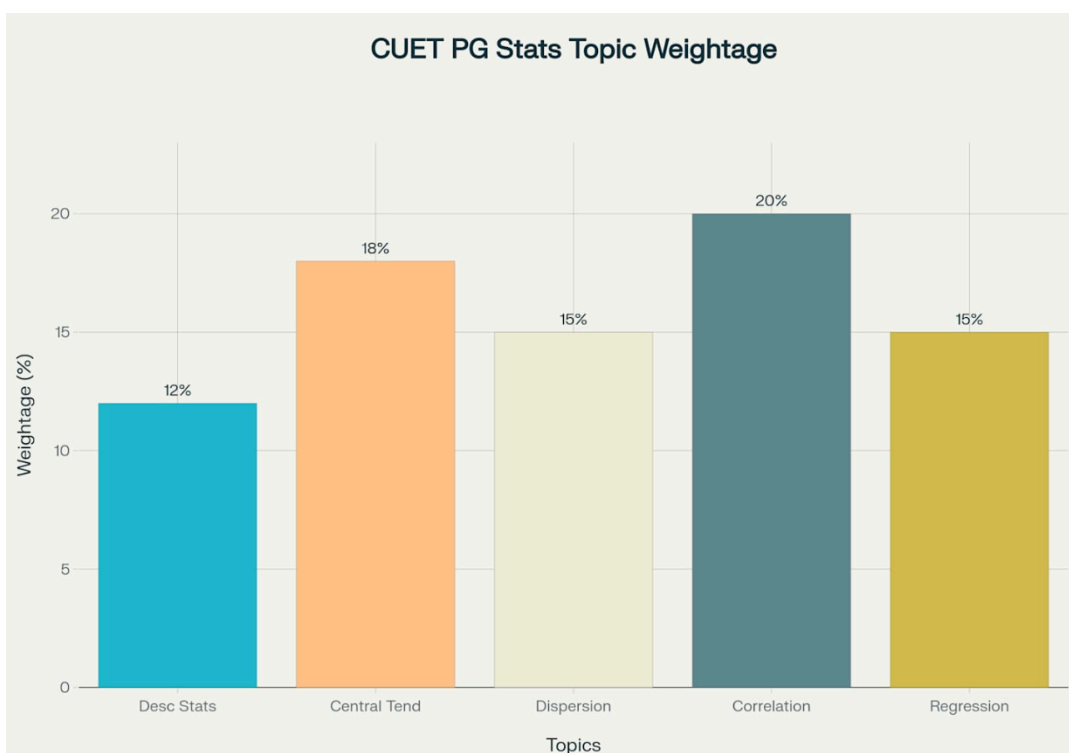
# Troublesome Twins: Statistics and Mathematics

The Statistics and Mathematics sections constitute the critical quantitative backbone of the CUET PG Economics examination, representing approximately 20-22% of the total question paper across the four-year period from 2022-2025. These sections have evolved significantly, showing increased complexity and economic application focus, making them essential components for achieving competitive scores in prestigious institutions like DSE, JNU, and IGIDR.

## Statistics Section: Comprehensive Topic Analysis

The Statistics section encompasses eight major topic areas, with distinct weightage patterns that have remained relatively stable across examination years

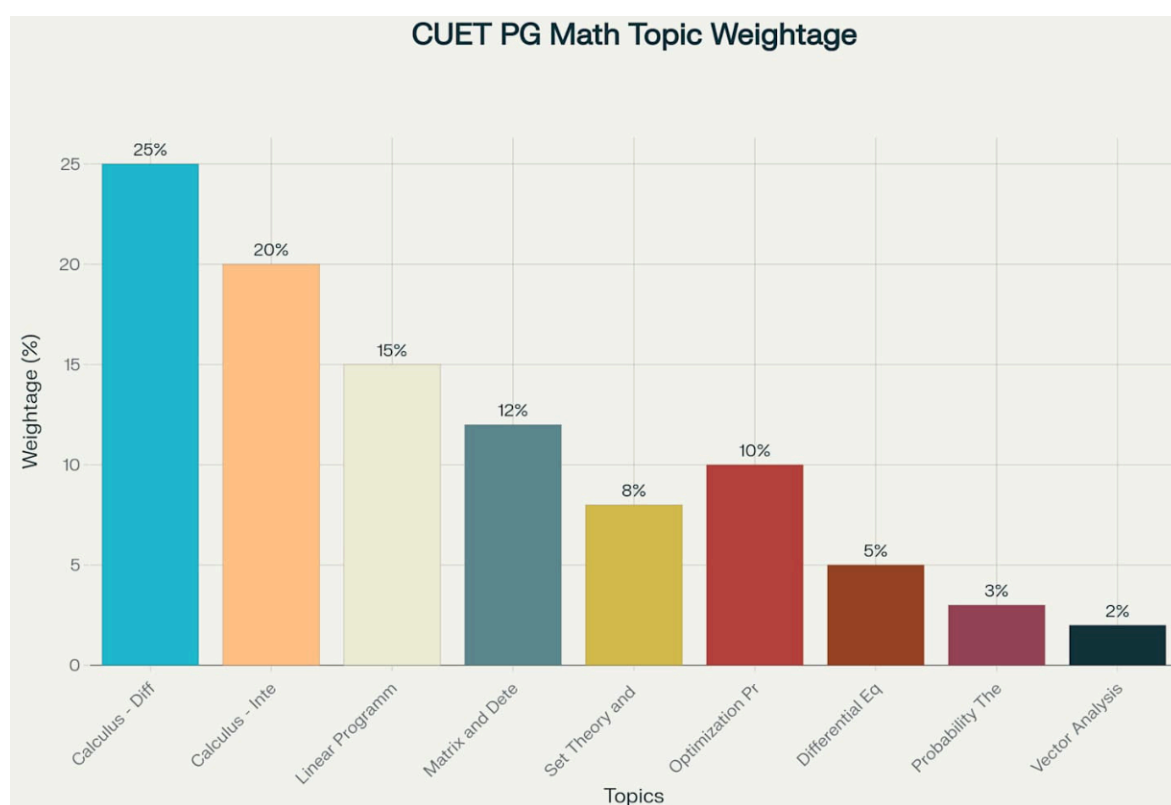
Topic	Subtopics	Weightage %age	Difficulty Level	Questions Per Year
Descriptive Statistics	Data Classification, Frequency Distribution, Graphical Representation	12%	Easy	1
Measures of Central Tendency	Mean, Median, Mode, Quartiles, Percentiles	18%	Easy-Moderate	2
Measures of Dispersion	Range, Quartile Deviation, Average Deviation, Standard Deviation, Variance	15%	Moderate	1
Correlation Analysis	Pearson Correlation, Rank Correlation, Partial Correlation	20%	Moderate-Difficult	2
Simple Regression Model	Linear Regression, Regression Lines, Coefficient of Determination	15%	Difficult	1
Probability Distribution	Normal Distribution, Binomial Distribution, Poisson Distribution	10%	Moderate	1
Sampling Theory	Random Sampling, Sampling Methods, Sampling Distributions	7%	Moderate	1
Skewness and Kurtosis	Measures of Skewness, Kurtosis, Moments	3%	Difficult	0



# Mathematics Section: In-Depth Topic Breakdown

The Mathematics section covers nine major areas, with calculus-based topics dominating the weightage distribution. The section has experienced notable evolution, particularly with the emergence of optimization and matrix operations as significant topics in recent examinations.

Topic	Subtopics	Weighage %tage	Difficulty Level
Calculus - Differentiation	Basic Differentiation, Chain Rule, Partial Derivatives, Economic Applications	25%	Easy-Moderate
Calculus - Integration	Indefinite Integrals, Definite Integrals, Applications in Economics	20%	Moderate
Linear Programming	Formulation of LPP, Graphical Method, Simplex Method, Economic Applications	15%	Difficult
Matrix and Determinants	Matrix Operations, Inverse, Rank, Determinant Properties	12%	Moderate
Set Theory and Functions	Set Operations, Relations, Functions of One/Several Variables	8%	Easy
Optimization Problems	Unconstrained Optimization, Lagrange Multipliers, Economic Applications	10%	Difficult
Differential Equations	First Order ODEs, Linear Differential Equations, Growth Models	5%	Difficult
Probability Theory	Basic Probability, Bayes Theorem, Expected Value, Variance	3%	Easy
Vector Analysis	Vector Operations, Scalar and Vector Fields	2%	Moderate



The quantitative sections demonstrate a clear trajectory toward increased analytical complexity and economic application integration. The 50% growth in quantitative questions over four years indicates NTA's sustained commitment to testing mathematical and statistical competency essential for advanced economics study .

Emerging topic areas including optimization problems and matrix operations suggest continued evolution toward more sophisticated analytical problem-solving . Candidates should anticipate further integration of economic theory with quantitative methods, requiring strong conceptual understanding beyond rote computational skills.



# Indian Economy Section

The Indian Economy section encompasses eleven major topic areas, ranging from colonial economic history to contemporary policy challenges, with distinct weightage patterns that have remained relatively consistent across examination years. The section maintains an average difficulty score of 3.3 out of 5, positioning it as moderately challenging while offering substantial scoring opportunities for well-prepared candidates. Recent analysis reveals that the section has undergone significant expansion, growing from 18 questions in 2022 to 31 questions in 2025, representing the highest growth rate among all CUET PG Economics sections.

The examination pattern demonstrates clear emphasis on policy-oriented questions, with LPG Reforms (1991) and Current Economic Challenges dominating the weightage distribution at 20% and 18% respectively within the Indian Economy section. This evolution reflects the examination's increasing focus on contemporary economic developments and their historical contexts, requiring candidates to demonstrate both factual knowledge and analytical capabilities.

## Overview

- **Total Weightage:** 15% of CUET PG Economics exam
- **Questions in 2025:** 31 questions
- **Growth Rate:** 72.2% increase from 2022 to 2025
- **Average Difficulty:** 3.3/5 (Moderate to Difficult)

## Comprehensive Topic-wise Analysis

### High-Priority Topics (Tier 1)

The Indian Economy section features four high-priority topics that collectively account for 68% of the section weightage and consistently generate the highest number of questions across examination years. These topics demonstrate exceptional Return on Investment (ROI) potential, with scores ranging from 8 to 10 on a 10-point scale, making them essential for competitive performance.

***LPG Reforms (1991) emerges as the most critical topic, carrying 20% weightage within the Indian Economy section and consistently producing 3-5 questions annually.*** This topic encompasses the 1991 Balance of Payments crisis, the trinity of Liberalization-Privatization-Globalization policies, and their long-term impacts

on Indian economic structure. Questions frequently test understanding of policy causation, implementation mechanisms, and comparative outcomes, requiring both historical knowledge and contemporary analysis.

***Current Economic Challenges maintains the second-highest priority with 18% weightage***, focusing on contemporary issues such as demonetization impacts, GST implementation, unemployment trends, and recent policy developments. This topic has shown increasing complexity, with questions moving from basic factual recall to advanced policy analysis and current affairs integration. The topic's dynamic nature requires continuous updating with latest economic developments and government policy announcements.

***Colonial Economy constitutes 15% weightage, covering macro trends during the imperial period, agricultural structures, railway development, and the deindustrialization debate.*** This foundational topic provides essential historical context for understanding modern Indian economic development and frequently appears in comparative analysis questions. The topic maintains moderate difficulty levels while offering high scoring potential for candidates with strong conceptual clarity.

Development Experience accounts for 15% weightage, encompassing post-independence economic planning, five-year plans, mixed economy models, and comparative development strategies. Questions often require understanding of policy evolution, sectoral development patterns, and India's experience relative to neighboring countries. This topic demonstrates stable question frequency with increasing emphasis on analytical and comparative components.

Topic	Weightage	Questions 2025	Difficulty
LPG Reforms (1991)	20%	5	2.8 (Moderate)
Current Economic Challenges	18%	5	3.5 (Difficult)
Colonial Economy	15%	3	3.2 (Moderate)
Development Experience	15%	4	3.0 (Moderate)

## Medium-Priority Topics (Tier 2)

Four medium-priority topics collectively represent 35% of section weightage, offering moderate ROI potential with scores ranging from 6 to 7. These topics require balanced preparation attention, focusing on key concepts while avoiding excessive detail that yields diminishing returns.

Fiscal Policy & Budget carries 12% weightage, covering government expenditure patterns, deficit management, tax policies, and budgetary processes. Recent examinations show increased emphasis on contemporary fiscal measures, including GST impacts and COVID-19 fiscal responses.

Agricultural Economics maintains 7% weightage with relatively straightforward questions on rural development, credit systems, and productivity trends.

Financial Sector Reforms and Public Economics each account for 8% weightage, focusing on banking sector evolution and public goods theory respectively.

Topic	Weightage	Questions 2025
Fiscal Policy & Budget	12%	3
Agricultural Economics	7%	2
Financial Sector Reforms	8%	2
Public Economics	8%	2

## Low-Priority Topics (Tier 3)

Three low-priority topics represent 17% of section weightage with limited ROI potential, scoring 4-5 on the ROI scale. These topics should receive minimal preparation time, focusing only on frequently tested concepts to maintain efficiency.

International Trade carries 5% weightage but demonstrates irregular question patterns, Industrial Development accounts for 6% weightage with basic conceptual focus, and Contemporary Issues maintains 6% weightage covering current economic developments.

Topic	Weightage	Questions 2025
International Trade	5%	1
Industrial Development	6%	2
Contemporary Issues	6%	2

## Year-wise Trends and Evolution Patterns

The Indian Economy section demonstrates clear evolutionary trends across the four-year examination period, with significant changes in both question distribution and thematic emphasis. The total section questions have increased from 18 in 2022 to 31 in 2025, representing unprecedented growth that reflects enhanced policy focus in economics education. This expansion indicates NTA's commitment to testing comprehensive understanding of India's economic development trajectory and contemporary challenges.